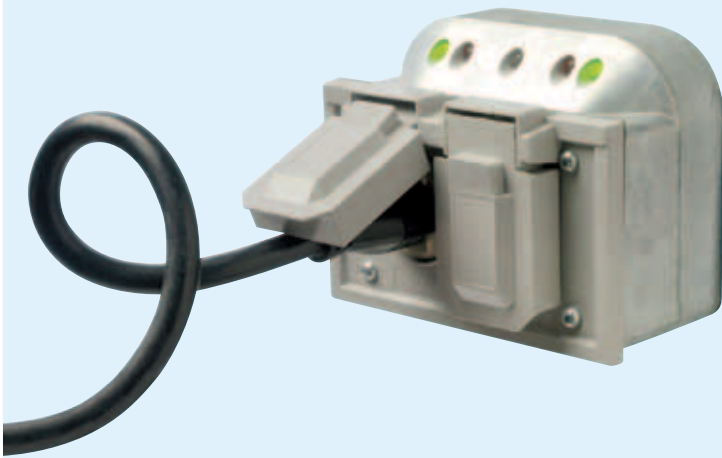


Plug into real savings.

SaskPower Parking Lot Controller Program



Parking lot controllers regulate electricity to outdoor electrical outlets, based on the outside temperature. This allows business owners to effectively manage electricity usage in parking lots.

Tenants, employees and other users will not notice a difference, as the controllers are designed to ensure block heaters get the right amount of electricity in all weather conditions.

Parking lot controllers can reduce electricity costs by approximately 50 per cent and can pay for themselves in just over one year.

How parking lot controllers work

A parking lot controller is similar to a standard outdoor electrical outlet, except that it regulates the electricity flow to the outlet based on outdoor temperatures. A typical setting would provide no electricity when the temperature is above -5 C. As the temperature drops, enough electricity is provided to ensure that block heaters are still effective without having electricity flow continuously. After the temperature drops below -25 C, the controller allows electricity to flow continuously.

Typical savings: 50 per cent of annual electricity costs

Program incentive

The SaskPower Parking Lot Controller Program is offering a \$50 incentive for each controlled parking stall. For most property owners, this incentive could cover over 50 per cent of the cost of each installed unit, depending on the controller selected. This incentive is applied at the time of ordering, so you won't have to spend the money and wait for a rebate cheque.

There is no limit to the number of controllers a property can install or on the number of stalls eligible to receive the \$50 per stall incentive. However, to be eligible the product must be purchased from a participating distributor and be installed within Saskatchewan.

You save money annually and your tenants, staff and guests won't notice a difference.



Return on investment

Parking lot controllers versus regular outlets: typical annual savings

Parking lot	Estimated annual savings*	SaskPower incentive	Payback period
Multi-residential 100 stalls (e.g. apartment complex)	\$2,000	\$5,000	2 years
Commercial, industrial or institutional property 150 stalls (e.g. hospital)	\$4,800	\$7,500	1 year, 3 months
Office 80 stalls (e.g. two-storey office building)	\$900	\$4,000	3 years, 6 months

Calculations and assumptions

- Multi-residential: 12 hours/day X 7 days/week X 16 weeks/year.
- Commercial, industrial or institutional property: 20 hours/day X 6 days/week X 16 weeks/year.
- Office: 9 hours/day X 5 days/week X 16 weeks/year.
- Savings are based on average block heater loads of 500 watts. No savings are calculated to account for interior car warmers, which use approximately 900 watts.
- Savings assume that power will be disabled 50 per cent of the time during an average winter.

* Savings are based on existing service rates; rates may change at any time.

For more information on the SaskPower Parking Lot Controller Program, visit saskpower.com/save_power or call 1-888-757-6937 (toll-free).

7231.01/Jan11